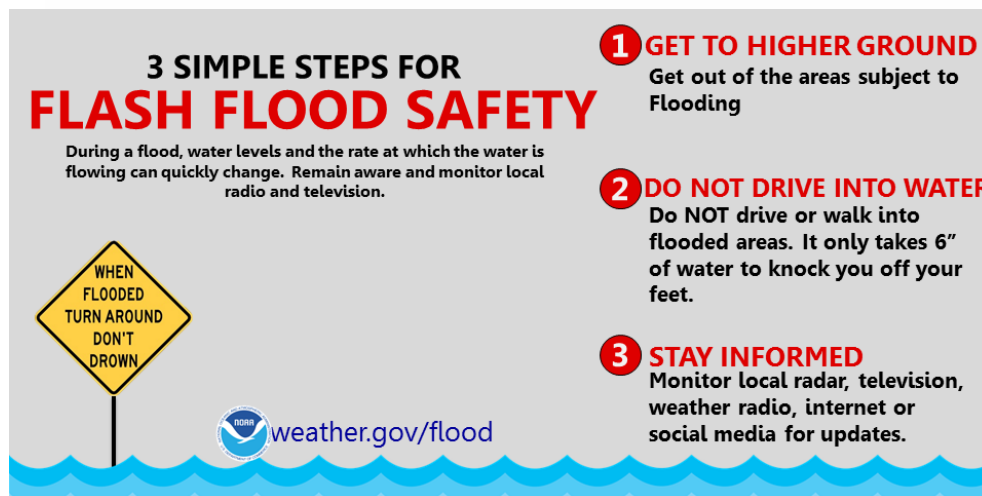




FLOOD INFORMATION

Floods are one of the most common hazards in the United States. Floods can affect communities, neighborhoods, entire river basins, and entire islands. However, all floods are not alike. While some floods develop slowly, sometimes over a period of days, flash floods can develop quickly, sometimes in just a few minutes and without any visible signs of rain. Be aware of flood hazards, especially if you live in a low-lying area, near water, or downstream from a mountain. Even very small streams, gullies, creeks, culverts, dry streambeds, or low-lying ground that appears harmless in dry weather can flood. The following are terms to familiarize yourself with in order to better prepare for floods:

- ❖ **Flash flood or flood watch:** A flash flood watch is possible within the designated watch area. Listen to your NWR, radio, TV, or mobile device and be prepared to move to higher ground.
- ❖ **Flash flood or flood warning:** A flash flood warning is issued when flooding has been reported or is imminent. Take necessary precautions at once. If advised to evacuate, do so immediately. Get to higher ground and get out of areas subject to flooding. This includes dips, low spots, canyons, washes, etc.
- ❖ **Small stream flood advisory:** Flooding of small streams, streets, and low-lying areas is occurring. Avoid areas already flooded, especially if the water is flowing fast. Do not attempt to cross flowing streams.



Flood Preparations

The following are things you can do in preparation of a flood:

- ❖ Build an emergency kit and prepare a communications plan.
- ❖ Practice the evacuation plan.
 - Knowing the plan may save your life and the lives of others.
 - Practicing makes the appropriate response more of a reaction, requiring less thinking during an actual emergency.
- ❖ Know the safest route from your home or place of business to high, safe ground should you have to evacuate quickly.
- ❖ Be able to follow your evacuation plan during inclement weather if needed. We are on the 10th and 11th floors of the



CFT building, we could remain on our floors if building is safe.

- Outer island offices will need to adhere to local emergency instructions.
- ❖ Know your community's warning systems and disaster plans, including evacuation routes.
- ❖ Know how high above sea level your street is, as well as how far from the shoreline or other high-risk waters your street is located.
- ❖ Have a battery, hand-crank, or solar powered radio on hand in case electricity service is disrupted.
- ❖ Know to stay away from the beach.
 - If you can see the wave, you are too close to escape it.
CAUTION: If the water is noticeably receding away from the shoreline, move away immediately. This is nature's tsunami warning.
- ❖ If you work or live in an area that is frequently flooded, keep materials such

Staying Safe During a Flood

- ❖ If you have a flood-related emergency and need assistance, call 911.
- ❖ Floodwaters can rise very rapidly, so be prepared to evacuate before the waters reach the property.
- ❖ Head for higher ground and stay away from floodwaters.
- ❖ If caught in building with sudden rising waters, move to the second floor (if possible) or higher if necessary.
 - Take a flashlight and portable radio with you and wait for help.

as sandbags, plywood, plastic sheeting, and lumber on hand that can be used to protect your property.

NOTE: Sandbags should not be stacked directly against the outer walls of a dwelling.

- ❖ Be aware of streams, drainage canals, canyons, and other areas known to flood suddenly.
 - Flash floods can occur in these areas with or without typical warnings such as rain clouds or heavy rain.
- ❖ Higher elevations are usually safe from flooding for the most part, but if caught at home or another place of business, follow the best safety practices for your environment.
- ❖ Atlas will test Rave Mobile as part of the communication plan with staff.
 - Plan how you will communicate with family members if you lose power.
 - For example, you can call, text, email or use social media.

- ❖ Do not try to swim to safety. Rescue teams will be looking for you.
- ❖ Assist others who may have physical complications in heading to higher ground or evacuation.
- ❖ Tune in to TV, radio, or mobile devices and follow emergency instructions.
 - Keep a battery, hand-crank, or solar powered radio on hand in the event of a power outage.